

biosphärenpark.haus

TOURIST INFORMATION/OFFICE

STORES/SHOPS

 Boden 34, 6731 Sonntag



Visitor centre of the UNESCO Biosphere Reserve Großes Walsertal

Guest Cards



Guest-Card Bregenzerwald & Großes Walsertal

Detailed description

Biosphere Reserve Visitor Centre

- Biosphere Park exhibition 'Walser on the move' with B. Burmenta's quiz rally for children
- Biosphere Park shop with local products such as cheeses, sausages and handicrafts, with self-service machines (24/7) for shopping outside opening hours.
- Meeting point and space for socialising, mobile working or an afternoon of games with family or friends, also without consumption - bistro service
- Visitors' library with literature on environmental education and the history of the region
- Group programmes such as guided tours and the Adventure Race
- Continuing education programmes offered by the Bludenz Adult Education Centre
- Postal service centre

Further information at www.grosseswalsertal.at/biosphaerenpark_haus, info@grosseswalsertal.at or T +43 5554 200 10

Exhibition 'Walser on the move'

More than 700 years ago, the Walser set out from the Swiss canton of Valais to settle in an unknown new homeland. The close relationship between man and nature has always been an inner attitude of the Walser and led to the strategic orientation of the region some 700 years later with the award of UNESCO Biosphere Reserve status.

The exhibition invites visitors to find out more about the UNESCO biosphere reserve, life and work in the Great Walser Valley,

mountain cheese production and the indispensable services provided to preserve the cultural landscape. The exhibition is free of charge during opening hours. The Bergwaldturm and the Alchemilla herb garden are also open to the public.

biosphärenpark.haus at the Buramarkt in Feldkirch

From Walserstolz mountain cheese to alpine butter and mountain tea. At Elisabeth's market stall.

Products can be ordered up to two days in advance and collected and paid for at the market stall.

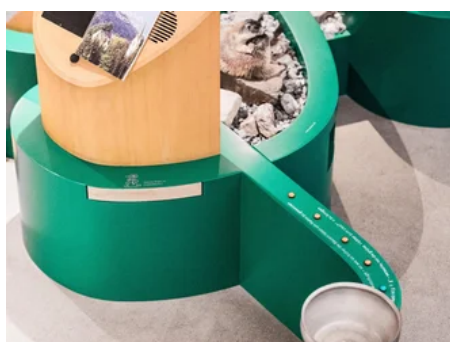
Dates: 8 am to 12.30 pm (3 and 17 May 2025 | 7 and 21 June 2025 | 5 and 19 July 2025 | 2 and 16 August 2025 | 6 and 20 September 2025 | 4 and 18 October 2025 | 8 and 22 November 2025)

Contact T +43 5554 20010 (during opening hours) info@grosseswalsertal.at

Guest card services

Links

> [biosphärenpark.haus](https://www.biosphärenpark.haus)





Opening hours

02.01.2025 - 30.04.2025

Mo - Su

14:00 - 18:00



Address

biosphärenpark.haus

Boden 34

6731 Sonntag



Contact

+43 5554 20010

info@grosseswalsertal.at

<http://www.grosseswalsertal.at> ↗